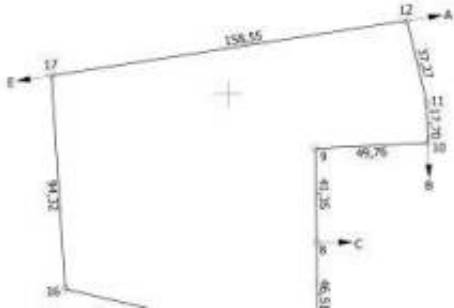




## Commercial property in Jelgavas district for sale 79.500€



### Agenten-Info

Name:	REALAT Ltd
Name der Firma:	
Land:	Lettland
Erfahrung seit:	2009
Art der Dienstleistung:	Immobilien verkaufen
Spezialgebiete:	
Art der Immobilie:	Wohnungen, Häuser
Telefon:	+371 (67) 210-010
Sprachen:	Latvian
Webseite:	<a href="https://www.realat.lv">https://www.realat.lv</a>

### Anzeigen-Details

Immobilie für:	Kaufen
Preis:	USD 91,645.2

### Standort

Land:	Lettland
Staat/Region/Provinz:	Jelgavas novads
Adresse:	Garozes iela, 100 B
Postleitzahl:	3249
Veröffentlicht:	22.05.2025

### Beschreibung:

A Plot for Residential Development in Jelgava at an Attractive Price, Next to the Picturesque Lielupe River

In a quiet and green district of Jelgava, between Garozas Street 100B and the Lielupe River, a separated undeveloped land plot of 1.5605 hectares is offered for sale, with the potential to build up to 10 individual residential houses.

An example of how the plot could be divided is shown in photo 4.

This is an excellent location for developing a small residential neighborhood or a private housing estate. The plot is located within the city limits, with convenient access and good transport connections: only 2 km to the center of Jelgava, around 40 km to Riga, and close to the A8 highway.

All municipal utilities—electricity, water, sewage, and gas—are available on Garozas Street, directly at the edge of the plot.

The price may vary depending on the market situation, but currently it is especially attractive for developers and investors looking for land in a promising area with well-developed infrastructure and



---

convenient transport links.

Adjacent land plots are also available for sale: Garozas iela 100A, a 17-hectare riverfront plot, and Garozas iela 100D, which offers additional opportunities for large-scale construction and project development.

Land plots for commercial development are available on the opposite side of the road.

For more information, please call.

## **Allgemein**

Fertige m<sup>2</sup>: 15605 m<sup>2</sup>

## **Mietbedingungen**

Verfügbar ab:

## **Kontaktinformation**

IMLIX ID: IX6.925.443

