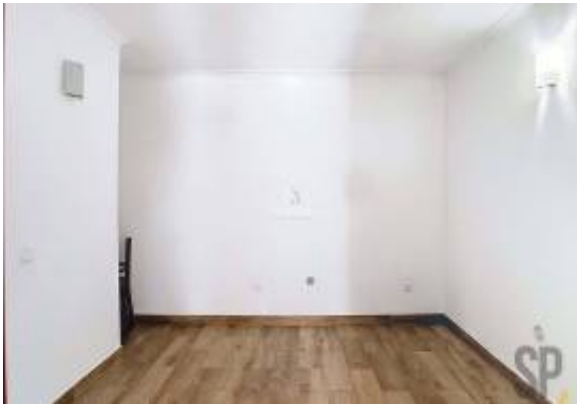




## A soulful refuge in the heart of Alentejo – Terrugem, Elvas



### Agenten-Info

Name:	António Pereira
Name der Firma:	ITHLUX
Land:	Portugal
Erfahrung seit:	
Art der Dienstleistung:	Immobilien verkaufen
Spezialgebiete:	
Art der Immobilie:	Wohnungen
Telefon:	
Sprachen:	Portuguese
Webseite:	

### Anzeigen-Details

Immobilie für:	Kaufen
Preis:	USD 97,980.42

### Standort

Land:	Portugal
Staat/Region/Provinz:	Portalegre
Stadt:	Elvas
Veröffentlicht:	24.07.2025

### Beschreibung:

Imagine waking up to the soft sound of silence, in a house where time runs slowly and every corner invites you to peace.

It is a two-storey villa, located in the picturesque village of Terrugem, Elvas, finds the perfect balance between authenticity, comfort and quality of life.

Distributed harmoniously, the house offers two cozy bedrooms, ideal for quiet nights and lazy mornings, two versatile living rooms, which can be spaces for socializing, reading or even remote work, a practical and functional kitchen where the aromas of Alentejo recipes can come to life, and two bathrooms that bring practicality to everyday life.

But the real charm is beyond the walls it's in the surroundings. Terrugem is a lively and complete village, with traditional shops, municipal market full of local flavors, primary school, nursery, municipal swimming pools, sports facilities, health center and pharmacy. Here, everything is just a walk away. Life has a different rhythm more human, calmer, more real.

If you are looking for a home to live in peace and quality, a refuge to escape the stress of the city or a safe investment in an area with growing demand, it is the right opportunity. The property, with its two



living rooms and two floors, allows several possibilities of use whether for own residence, holiday home, or investment.

Let yourself be conquered by Terrugem. Come and see this house that is much more than a property it is an invitation to a new way of living. - REF: ITH3685

Neu: Nein

## Allgemein

Schlafzimmer: 2  
Badezimmer: 2  
Fertige m<sup>2</sup>: 78 m<sup>2</sup>

## Mietbedingungen

Verfügbar ab:

## Kontaktinformation

IMLIX ID: ITH3685

