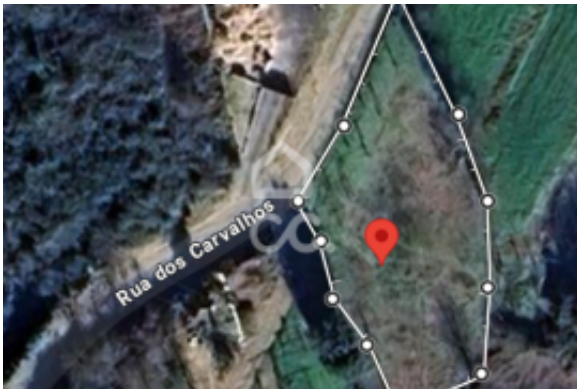




Rustic Land with Urban Potential



Agenten-Info

Name:	Rui Dias
Name der Firma:	ComprarCasa Porto
Firma:	Paranhos
Land:	Portugal
Erfahrung seit:	
Art der Dienstleistung:	Immobilien verkaufen
Spezialgebiete:	
Art der Immobilie:	Wohnungen
Telefon:	
Sprachen:	English, Portuguese
Webseite:	https://www.comprarcas.a.pt/portoparanhos

Anzeigen-Details

Immobilie für:	Kaufen
Preis:	USD 57,286.3

Standort

Land:	Portugal
Staat/Region/Provinz:	Porto
Stadt:	Lousada
Veröffentlicht:	02.10.2025

Beschreibung:

Rustic land with an excellent location in Figueiras de Cima, in the parish of União de Figueiras e Covas, municipality of Lousada (district of Porto).

The land has very pleasant natural characteristics, inserted in a quiet area, with unobstructed views.

It is located in a transition zone between the rural environment and areas with a growing trend of urbanization.

Figueiras Covas is well served by the main roads of the region, with close relations with the center of Lousada, and connections to neighboring municipalities.

The land, currently classified as rustic, may be transformed into an urban one.

Buy House Porto Paranhos

"Where Stories End Well."

Mission

Our mission is to provide a high quality service, security and transparency in the real estate area, with our client as our main asset. It is intended to be with people, to help make their dreams come true, having our time and tools. We work as a team to achieve the goals of each client, we share information and we are



constantly innovating. We collaborate internally and externally in order to achieve the best results.

Values

The quality of our services is directly linked to the transparency and commitment we place in each person. We are available for His success. We dedicate our time to creating bonds and relationships of trust. This is our DNA.

Want to buy, sell, rent or invest in a property in Porto, Portugal? Contact us!

We work with the national and international market.

APEMIP: 6412 AMI: 21325

Office Hours:

Monday to Friday 9:30 am to 7 pm Saturday 10 am to 1 pm - REF: 395/T/00297

Allgemein

Grundstücksgröße: 1380 m²

Mietbedingungen

Verfügbar ab:

Kontaktinformation

IMLIX ID: 395/T/00297

