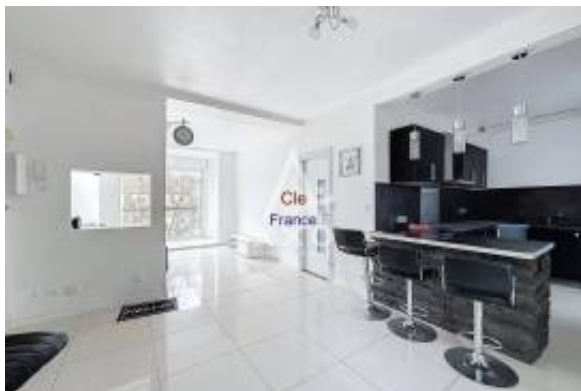




Duplex Apartment in Great Location



Στοιχεία μεσίτη

Όνομα:	David Evans
Όνομα εταιρείας:	Cle France Ltd
Χώρα:	United Kingdom
Experience since:	
Τύπος υπηρεσίας:	Selling a Property
Specialties:	
Property Type:	Apartments, Houses
Τηλέφωνο:	+44 (1440) 820-358
Languages:	English, French
Site:	https://clefrance.co.uk

Στοιχεία καταχώρησης

Ακίνητο για:	Πώληση
Τιμή:	USD 160,604.81

Τοποθεσία

Χώρα:	France
Ταχυδρομικός κωδικός:	60000
Δημοσιεύθηκε:	03/02/2025
Περιγραφή:	

REDUCED in price - Splendid 4-Room Apartment in the Heart of Beauvais Ideal Location: Located in the heart of Beauvais, this apartment puts you just a stone's throw from amenities, shops, and transport (SNCF and bus station nearby). Bright and functional spaces: Spacious double living room, ideal for entertaining or relaxing. Equipped kitchen with scullery for optimised storage. Hallway with built-in closet for additional storage space. 2 comfortable bedrooms, perfect for a family or for an office and a guest room.

Comfort and amenities: Practical bathroom in good condition.

Double glazing offering excellent sound and thermal insulation.

Apartment in very good condition, ready to welcome you without any work. Ideal exposure:

Enjoy beautiful light throughout the day thanks to its favorable orientation.

Building: Located on the 3rd and top floor, you benefit from absolute calm with no neighbours above.

This apartment combines prime location, comfort, and practicality.



Ideal for city dwellers seeking serenity while remaining close to all amenities.

Apologies for the triangle overlay on the images, this particular agent is in a very competitive sector and wishes to protect their images from being copied. If you want to see clean images of this listing simply Make an Enquiry and we will respond.

The Region of Picardy - or Picardie as it is written in French - consists of three departments, the Oise (60), capital Beauvais, the Aisne (02) capital Laon, and the Somme (80), whose capital Amiens, is also the regional capital.

Lying in the historic centre of action of western Europe, in the triangle between Paris, Amsterdam and London, Picardy is an area with a very rich history. It was in this part of France that were fought some of the most famous battles of French and European history, notably the battle of Crecy, and the battle of the Somme.

And in the course of the last thousand years, areas that are now part of modern region of Picardy have been ruled over at different times by the English, the Habsburgs, the Spanish and the French.

In past centuries, the region was relatively prosperous; its productive farmlands, including a large expanse of flat or relatively flat land, created wealth in local towns and cities, a wealth now reflected in the many fine gothic churches and cathedrals of the region.

As for the northern part of the region, including the departments of the Somme and most of the Aisne, these areas are largely agricultural. This gives way to nice villages dotted around the countryside and some very nice locations for both holiday homes in rural settings and property closer to the towns for full-time living.

We at Cle France specialise in Property for sale in France through our network of Agents and French Registered High Street Estate Agents. We have sold thousands of houses for sale in France over the years and have helped many find and buy their dream home in France.

We can also help you with everything to do with buying a house in France including getting a mortgage, organising currency exchange, renovation advice, property surveys, planning permission, French translation, opening a bank account and everything to do with French property sales.

All our prices are quoted as FAI (agency fees included) unless otherwise stated and 'notaire' fees are around 7% (on average) but feel free to ask us for an exact amount on any particular French property for sale you are interested in.

Indeed please feel free to use the 'MAKE AN ENQUIRY' tab above to ask us any questions you have about buying a property in France. Our UK based enquiry office and staff will guide you through the entire buying process step by step from your first contact right up to taking ownership and beyond, all free of charge.



So when you buy through Cle France you can be confident that you are paying no more than the standard commission rates you would pay anyway, but you have the added benefit of a bi-lingual support team.

For everything you need to know about French property visit www.clefrance.co.uk

Κοινά

Κρεβατοκάμαρες: 2

Μπάνια: 1

Lease terms

Date Available:

Contact information

IMLIX ID: IX6.631.471

