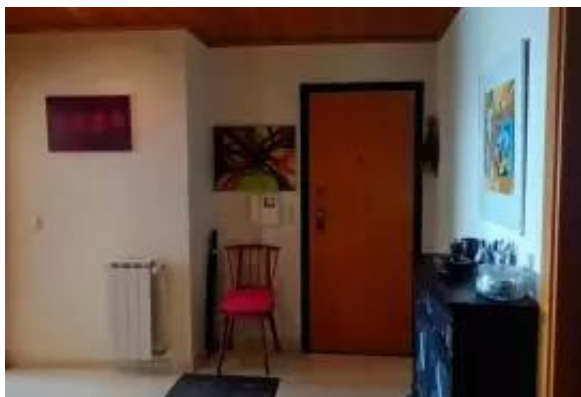




## 2-BEDROOM APARTMENT WITH SEA VIEW, BALCONIES



### Στοιχεία μεσίτη

Όνομα: bj.cardoso75  
Όνομα  
εταιρείας:  
Χώρα:  
Experience  
since:  
Τύπος  
υπηρεσίας:  
Specialties:  
Property Type:  
Τηλέφωνο:  
Languages:  
Site:

### Στοιχεία καταχώρησης

Ακίνητο για: Πώληση  
Τιμή: EUR 460,000

### Τοποθεσία

Δημοσιεύθηκε: 20/08/2025

Περιγραφή:

This splendid two-bedroom apartment boasts uninterrupted vistas of the countryside and the sea. Nestled in a tranquil and well-connected area of Mafra, it sits a mere five-minute stroll from both the historic centre and the iconic Convent of Mafra.

Main features:

- Private area: 98.80 m<sup>2</sup>
- Dependent area (storage room + parking): 27.84 m<sup>2</sup>
- High floor (equivalent to second floor) with lift access from basement
- Two spacious bedrooms with built-in wardrobes (one with a small closet).
- Large living room with a fireplace and a balcony with sea views.
- Generous kitchen with a separate balcony and a marble pantry.
- Full bathroom with bathtub
- Entrance hall with a wooden false ceiling and recessed lighting.
- Central vacuum and central heating in all rooms
- Covered parking space and storage room with windows (27 m<sup>2</sup>)

Excellent location:

- 5 minutes' walk from:
  - Mafra historic centre
  - Mafra Convent
  - Pharmacies, mini-markets, traditional shops and the municipal market



- Local police station, bars and restaurants
- Private clinics and public national healthcare
- 5 minutes by car from:
- Large shopping centres (supermarkets)
- Access to the A21, with connections to Ericeira and Lisbon
- Public transport and schools nearby

Leisure and wellness facilities nearby:

- City Sports Park with:
    - Indoor and outdoor swimming pools
    - Gym, fitness rooms and group classes
    - Outdoor tennis and basketball courts
    - Leisure areas and group sports (futsal, handball, volleyball, etc.).
  - Jardim do Cerco, known for its biodiversity and tranquillity
- Tapada Nacional de Mafra is ideal for hiking, picnics and observing nature.

Organised condominium:

- Monthly fee: €40
- Building with a lift from the basement to the apartments
- Easy access for people with reduced mobility

Location and surroundings:

- Beaches: 10 minutes from Ericeira (home to famous beaches for surfing, leisure and tourism).
- City: 30 minutes from Lisbon and Lisbon International A

Νέος:	Όχι
Κατάσταση:	Very Good
Κατασκευάστηκε:	2002
Tenanted:	Όχι

## Κοινά

Κρεβατοκάμαρες:	2
Μπάνια:	1
Τελειωμένα τετραγωνικά πόδια:	98 τ.μ
Basement sq. ft.:	28 τ.μ
Floor Number:	1
HOA dues per month:	EUR 40

## Room details

Total rooms:	3
Rooms:	Mud room, Walk-in closet, Dining room, Family room
Appliances:	Range / Oven
Indoor Features:	Fireplace, Intercom system, Cable ready
Floor Covering:	Laminate, Tile
Basement:	Finished



---

## Utility details

Heating:	Ναί
Heating Type:	Wall
Heating Fuel:	Gas
Cooling Type:	None

## Building details

Parking:	Ναί
Number of Carports:	1
Total Number of Parking Spaces:	1
Building Amenities:	Elevator, Over 55+ active community, Storage
Exterior:	Stone
Outdoor Amenities:	Balcony/patio
Αριθμός ορόφων:	1
View:	Mountain, Territorial, Water
Orientation:	E

## Rental details

Furnished:	Όχι
Pets Allowed:	Ναί
Pet Species Allowed:	Cats OK, Small Dogs OK, Large Dogs OK
Laundry:	None

## Lease terms

Date Available:

## Contact information

Τηλέφωνο:	+351 (93438) 714-7
IMLIX ID:	IX7.436.563

