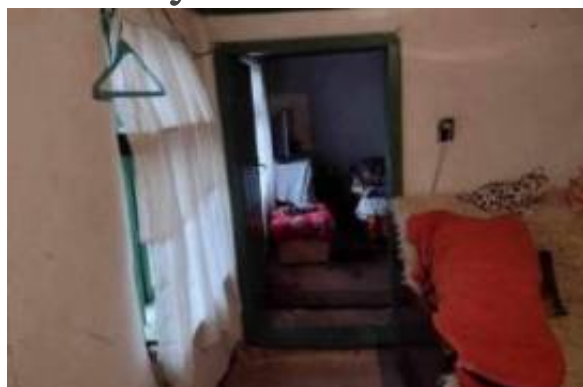




Property based in Smyadovo Municipality is located at the foot of the northern slopes of the Eastern Stara Planina Pay Monthly



Info Agente

Nombre: ArKadia
Nombre empresa:
País: Reino Unido
Teléfono:
Languages: Dutch, English, French, German, Italian, Polish, Portuguese, Romanian, Russian, Spanish, Swedish

Detalles del anuncio

Propiedad para: Venta
Precio: USD 22,502.65

Ubicación

País: Bulgaria
Estado/Región/Provincia: Varna
Ciudad: Varna
Publicado: 19/04/2025

Descripción:

Price:

€20.000,00

District:

Varna

Category:

House

The Smyadovo Municipality is located at the foot of the northern slopes of the Eastern Stara Planina and falls into two physical and geographical regions: the Danubian Plain, eastern subregion (Ludogorsko-Dobrudjanska); Shumensko-Provadiyskiy District and the Stara Planina Region, subregion of the Fore-Balkans. To the north it borders the Shumen Municipality, to the northeast with the municipalities of Provadia and Dalgopol (Varna District), to the south with the municipalities of Ruen and Sungurlare (Bourgas District), to the west with the Varbitsa Municipality and to the northwest with the Veliki Preslav Municipality. In the eastern part of the municipality and a few kilometers from the town passes the Golyama Kamchia River, and several of the settlements of the municipality are located near its banks. The Shumen–Komunari railway line passes through the town, on which Smyadovo is a station. From here



passes the main road from Shumen in a southerly direction, entering Rishki Prohod and is a direct connection with Southern Bulgaria. The city also has a direct connection with the cities of Veliki Preslav and Dalgopol.

<https://maps.app.goo.gl/kSRinNtobqtV6cK68>

Price: 20000 eur

10000 Deposit

24 installment 420 eurso

Lease terms

Date Available:

Información adicional

URL sitio web:

http://www.arkadia.com/IBVQ-T6458/?utm_campaign=multicast&utm_medium=web&utm_source=IMLIX.COM

Contact information

IMLIX ID:

8383

