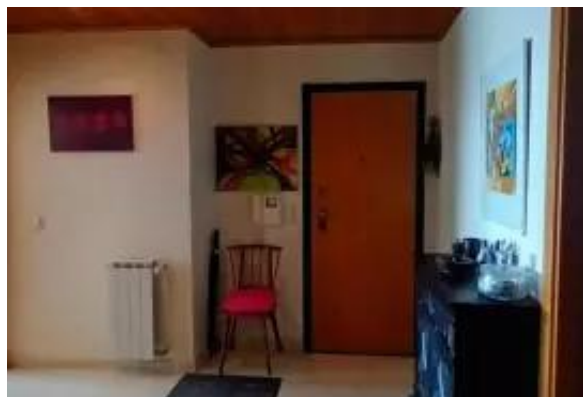




2-BEDROOM APARTMENT WITH SEA VIEW, BALCONIES



Info Agente

Nombre: bj.cardoso75

Nombre

empresa:

País:

Experience

since:

Tipo de

servicio:

Specialties:

Property Type:

Teléfono:

Languages:

Sitio web:

Detalles del anuncio

Propiedad para: Venta
Precio: USD 538,138.48

Ubicación

Publicado: 20/08/2025

Descripción:

This splendid two-bedroom apartment boasts uninterrupted vistas of the countryside and the sea. Nestled in a tranquil and well-connected area of Mafra, it sits a mere five-minute stroll from both the historic centre and the iconic Convent of Mafra.

Main features:

- Private area: 98.80 m²
- Dependent area (storage room + parking): 27.84 m²
- High floor (equivalent to second floor) with lift access from basement
- Two spacious bedrooms with built-in wardrobes (one with a small closet).
- Large living room with a fireplace and a balcony with sea views.
- Generous kitchen with a separate balcony and a marble pantry.
- Full bathroom with bathtub
- Entrance hall with a wooden false ceiling and recessed lighting.
- Central vacuum and central heating in all rooms
- Covered parking space and storage room with windows (27 m²)

Excellent location:

- 5 minutes' walk from:
 - Mafra historic centre
 - Mafra Convent
 - Pharmacies, mini-markets, traditional shops and the municipal market



-
- Local police station, bars and restaurants
 - Private clinics and public national healthcare
 - 5 minutes by car from:
 - Large shopping centres (supermarkets)
 - Access to the A21, with connections to Ericeira and Lisbon
 - Public transport and schools nearby

Leisure and wellness facilities nearby:

- City Sports Park with:
 - Indoor and outdoor swimming pools
 - Gym, fitness rooms and group classes
 - Outdoor tennis and basketball courts
 - Leisure areas and group sports (futsal, handball, volleyball, etc.).
 - Jardim do Cerco, known for its biodiversity and tranquillity
- Tapada Nacional de Mafra is ideal for hiking, picnics and observing nature.

Organised condominium:

- Monthly fee: €40
- Building with a lift from the basement to the apartments
- Easy access for people with reduced mobility

Location and surroundings:

- Beaches: 10 minutes from Ericeira (home to famous beaches for surfing, leisure and tourism).
- City: 30 minutes from Lisbon and Lisbon International A

Nuevo:	No
Condición:	Very Good
Fabricado:	2002
Tenanted:	No

Común

Dormitorios:	2
Baños:	1
Pies cuadrados terminados:	98 m2
Basement sq. ft.:	28 m2
Floor Number:	1
HOA dues per month:	EUR 40

Room details

Total rooms:	3
Rooms:	Mud room, Walk-in closet, Dining room, Family room
Appliances:	Range / Oven
Indoor Features:	Fireplace, Intercom system, Cable ready
Floor Covering:	Laminate, Tile
Basement:	Finished



Utility details

Heating:	Sí
Heating Type:	Wall
Heating Fuel:	Gas
Cooling Type:	None

Building details

Parking:	Sí
Number of Carports:	1
Total Number of Parking Spaces:	1
Building Amenities:	Elevator, Over 55+ active community, Storage
Exterior:	Stone
Outdoor Amenities:	Balcony/patio
Número de plantas:	1
View:	Mountain, Territorial, Water
Orientation:	E

Rental details

Furnished:	No
Pets Allowed:	Sí
Pet Species Allowed:	Cats OK, Small Dogs OK, Large Dogs OK
Laundry:	None

Lease terms

Date Available:

Contact information

Teléfono:	+351 (93438) 714-7
IMLIX ID:	IX7.436.563

