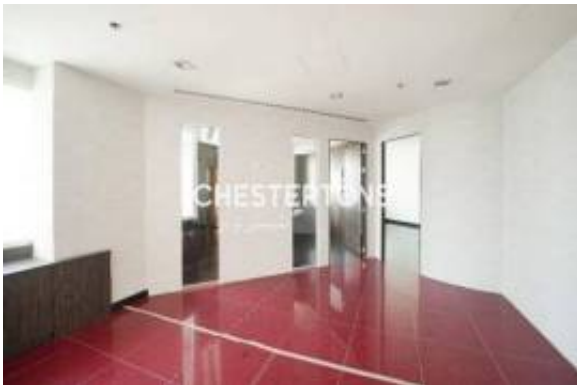




No Agent | Fully Fitted | Furnished | Prime Loc



Info Agente

Nombre:	ArKadia
Nombre empresa:	
País:	Reino Unido
Teléfono:	
Languages:	Dutch, English, French, German, Italian, Polish, Portuguese, Romanian, Russian, Spanish, Swedish

Detalles del anuncio

Propiedad para:	Alquiler
Precio:	USD 15,737.24

Ubicación

País:	Emiratos Árabes Unidos
Estado/Región/Provincia:	Dubai
Ciudad:	Dubái
Publicado:	28/04/2026

Descripción:

Located in Dubai.

Chestertons International is pleased to present The Gateway Building, an attractive low-rise development ideally situated in the heart of Dubai Media City. The property offers efficient floor plates and convenient access to a wide range of retail amenities. This fitted office, spanning 2,389 sq. ft., is now available and features a high-quality fit-out. The unit is ready for immediate occupancy and is offered at a lease rate of AED 165 per sq. ft., with an additional service charge of AED 20 per sq. ft. Unit Features: * Fully fitted office, comprising a reception area, conference room, and open-plan workspace * Completed network cabling * Floor-to-ceiling windows providing abundant natural light and views across Dubai Media City Building Features: * Uninterrupted views across Media City * Central reception and on-site security * Visitor parking facilities * Air conditioning included in the rent * Four high-speed lifts in each block * Well-maintained common area bathrooms * Dedicated male and female prayer rooms For further information regarding this leasing opportunity at The Gateway Building, or to arrange a viewing, please contact the listing agent, Suzan Radwan. Chestertons International Office 2503, Marina Plaza Dubai Marina, P.O. Box 283361 Dubai, UAE

Común

Pies cuadrados terminados:	387.68 m2
----------------------------	-----------

Lease terms

Date Available:



Información adicional

URL sitio web:

http://www.arkadia.com/MGPD-T17496/?utm_campaign=multicast&utm_medium=web&utm_source=IMLIX.COM

Contact information

IMLIX ID:

mcdsof21948l

