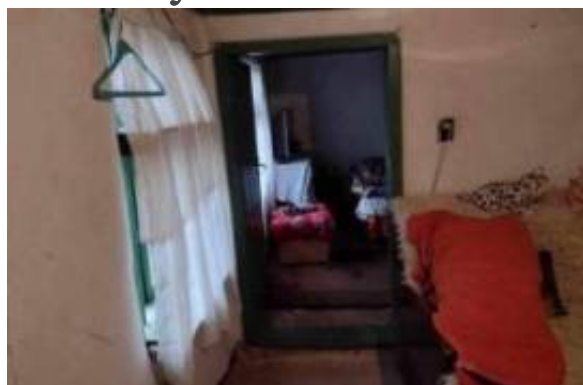




Property based in Smyadovo Municipality is located at the foot of the northern slopes of the Eastern Stara Planina Pay Monthly



Information de l'agent

Nom: ArKadia
Nom de compagnie:
Pays: Royaume-Uni
Téléphone:
Languages: Dutch, English, French, German, Italian, Polish, Portuguese, Romanian, Russian, Spanish, Swedish

Détails de l'annonce

Propriété à: Vendre
Prix: USD 22,502.65

Location

Pays: Bulgarie
État/Région/Province: Varna
Ville: Varna
Soumis: 19/04/2025
Description:

Price:
€20.000,00

District:
Varna

Category:
House

The Smyadovo Municipality is located at the foot of the northern slopes of the Eastern Stara Planina and falls into two physical and geographical regions: the Danubian Plain, eastern subregion (Ludogorsko-Dobrudjanska); Shumensko-Provadiyskiy District and the Stara Planina Region, subregion of the Fore-Balkans. To the north it borders the Shumen Municipality, to the northeast with the municipalities of Provadia and Dalgopol (Varna District), to the south with the municipalities of Ruen and Sungurlare (Bourgas District), to the west with the Varbitsa Municipality and to the northwest with the Veliki Preslav Municipality. In the eastern part of the municipality and a few kilometers from the town passes the Golyama Kamchia River, and several of the settlements of the municipality are located near its banks. The Shumen-Komunari railway line passes through the town, on which Smyadovo is a station. From here



passes the main road from Shumen in a southerly direction, entering Rishki Prohod and is a direct connection with Southern Bulgaria. The city also has a direct connection with the cities of Veliki Preslav and Dalgopol.

<https://maps.app.goo.gl/kSRinNtobqtV6cK68>

Price: 20000 eur

10000 Deposit

24 installment 420 eurso

Lease terms

Date Available:

Information additionnelle

Lien URL du site web: http://www.arkadia.com/IBVQ-T6458/?utm_campaign=multicast&utm_medium=web&utm_source=IMLIX.COM

Contact information

IMLIX ID: 8383

