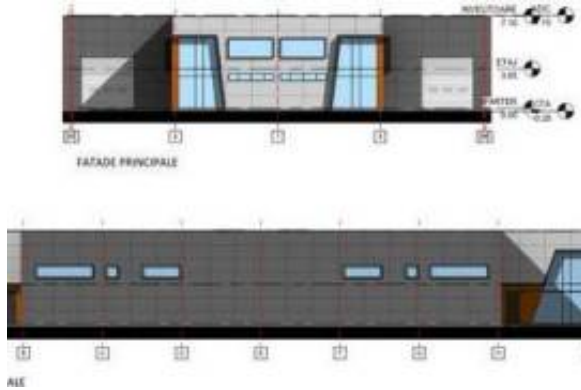




Industrial space for sale in Popesti-Leordeni, South Ring Road Bucharest



Information de l'agent

Nom: ArKadia
Nom de compagnie:
Pays: Royaume-Uni
Téléphone:
Languages: Dutch, English, French, German, Italian, Polish, Portuguese, Romanian, Russian, Spanish, Swedish

Détails de l'annonce

Propriété à: Vendre
Prix: USD 884,566.97

Location

Pays: Roumanie
Soumis: 21/05/2025
Description:
Located in Bucuresti.

****Investment Opportunity: Industrial Hall in Popești-Leordeni****

****Property Features:****

- ****Installed Power:**** 45 kW
- ****Parking:**** 18 parking spaces
- ****Land Area:**** 2000 sqm
- ****Construction Area:**** 832 sqm
- ****Ground Floor:**** 712 sqm
- ****Upper Floor:**** 120 sqm

****Utilities:**** The property is equipped with essential utilities: electricity, water, gas, and sewage.

****Location: Popești-Leordeni, Ilfov County****

Popești-Leordeni is located in close proximity to Bucharest, in the southeastern part, along the Olteniței Road. The area is becoming increasingly attractive for industrial and commercial investments due to its strategic location and ongoing developments.



Neighborhood Development: Danubiana Project

The Danubiana neighborhood is a significant project that the local administration of Popești-Leordeni has worked hard to develop. The key milestone in this initiative was the acquisition of approximately 2 hectares of land from SC Danubiana SA. This area includes not only the neighborhood but also access roads, green spaces, yards, water supply and sewage systems, schools, kindergartens, restaurants, and public transportation options.

This comprehensive planning aims to improve the quality of life for residents in the area and make it a more attractive place for businesses and families alike.

This industrial hall represents a promising investment opportunity in a rapidly developing area with significant growth potential. Don't miss out on the chance to secure a space that combines functionality and strategic location!

Année: 2024

Commun

Chambres: 8
Pied carré fini: 832 m²
Dimensions du lot: 2000 m²
Floor Number: 1

Lease terms

Date Available:

Information additionnelle

Lien URL du site web: http://www.arkadia.com/MGPD-T11778/?utm_campaign=multicast&utm_medium=web&utm_source=IMLIX.COM

Contact information

IMLIX ID: 14441

