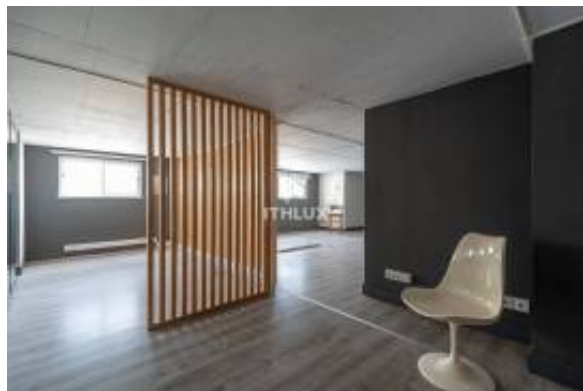




Office, retail or service space | 296 m2 | Carnaxide



Information de l'agent

Nom: António Pereira
Nom de compagnie: ITHLUX
Pays: Portugal
Experience since:
Type de service: Selling a Property
Specialties:
Property Type: Apartments
Téléphone:
Languages: Portuguese
Site web:

Détails de l'annonce

Propriété à: Louer
Prix: USD 2,290.58

Location

Pays: Portugal
État/Région/Province: Lisbonne
Ville: Oeiras
Soumis: 29/07/2025

Description:

"Change is the only constant in life."

Today, workspaces are a privileged space for all employees to meet, the ideal place for the birth of new ideas and innovation, thus playing an essential role in the company's productivity. The physical office is a fundamental part of the corporate culture, more human, more modern, more inviting and more inspiring.

Space for office, commerce or services;

With a privileged location near the exit of the A5 motorway, it has a total area of 296.50 m2 distributed over two floors.

It offers a perfect combination of accessibility, services and connections for your business, due to its versatility and the flexibility it offers.

Located next to the Joaquim Chaves Saúde building in Carnaxide, with a good public transport network and a wide range of services nearby.



Features:

Flexible and well-distributed spaces, practically ready to enter with a complete solution for companies looking for a modern and versatile workspace.

- Open-space areas
- Two independent sanitary facilities
- Ceiling with built-in lighting
- Pre-installation of air conditioning
- Meeting room
- Several private offices with good areas
- On two floors

Ideal for companies that value a strategic location, modern facilities and an efficient working environment. Or for those looking for a valuable real estate investment!

Note: This property results from the union of two autonomous fractions with separate land registers.

What's nearby (walking)

Trains Metro: Algés - 43 min | Cruz Quebrada - 52 min

Buses: R. C. Belo Morais Av. Lima Bastos - 4 min

Fernando de Almeida Street - 5 min

Airports: Tires (CAT) - 12 km | Lisbon Airport (LIS) - 21.5 km

Cafes Restaurants: La Barra Café - 5 min | Pacific Restaurant - 1 min

I look forward to your visit!

See you soon. - REF: ITH3733

Nouveau: Non

Commun

Chambres:	12
Salle de bains:	2
Pied carré fini:	296,5 m ²
Dimesions du lot:	385 m ²

Lease terms

Date Available:

Contact information

IMLIX ID: ITH3733



IMLIX

Marché immobilier IMLIX

<https://www.imlix.com/fr/>

