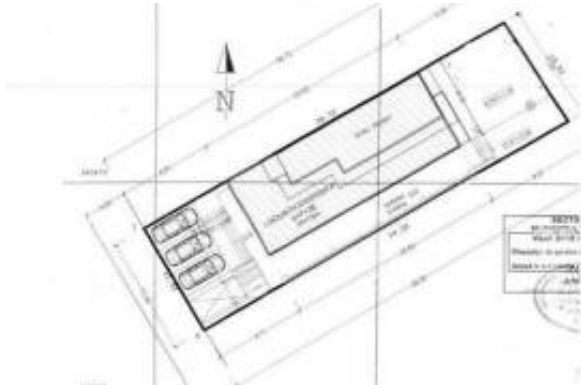




Retail Space + Offices, 1 Mai area, near Grivita Subway Station



Information de l'agent

Nom:	ArKadia
Nom de compagnie:	
Pays:	Royaume-Uni
Téléphone:	
Langues:	Dutch, English, French, German, Italian, Polish, Portuguese, Romanian, Russian, Spanish, Swedish

Détails de l'annonce

Propriété à:	Louer
Prix:	USD 11,604.19

Location

Pays:	Roumanie
État/Région/Province:	Bucarest
Soumis:	14/05/2026
Description:	Located in Bucuresti.

Commercial Space + Offices – 1 Mai Area, Near Grivita Metro Station

Energy-efficient building equipped with 20 kVA photovoltaic panels, providing up to 6 months per year with zero electricity costs.

The property is strategically located with quick access to Piata Victoriei, Gara de Nord and the main central arteries of Bucharest, offering excellent connectivity for both public transportation and car access.

The building is structured on Basement + Ground Floor + 4 Upper Floors and benefits from a functional layout, suitable for office activities, company headquarters or investment purposes with multi-tenant rental potential.

Approximate Areas:

- Basement – 178.8 sqm
- Ground Floor – 200.4 sqm
- 1st Floor – 157.3 sqm
- 2nd Floor – 157.5 sqm



- 3rd Floor – 157.1 sqm
- 4th Floor – 138.8 sqm

Layout:

Basement: kitchen, storage areas, 3 restrooms, offices, hallway

Ground Floor: 2 conference rooms, reception area, restrooms, technical room, 73 sqm covered terrace

1st Floor: offices, 2 restrooms, 2 balconies, hallway

2nd Floor: offices, restroom, 2 balconies, hallway

3rd Floor: offices, 2 restrooms, 2 balconies, hallway

4th Floor: open-space area, offices, 2 restrooms, 1 balcony and 1 terrace

Features & Advantages:

- Interior elevator
- Flexible layout
- Excellent natural light
- Suitable for single-tenant or multi-tenant configuration
- Easy access to public transportation
- Developing business area

The property is suitable for corporate headquarters, IT & outsourcing companies, medical clinics, educational institutions, commercial activities or as an income-generating investment.

For further details and to schedule a viewing, please feel free to contact us.

Commun

Chambres: 18
Pied carré fini: 1000 m²

Lease terms

Date Available:

Information additionnelle

Lien URL du site web: http://www.arkadia.com/MGPD-T17603/?utm_campaign=multicast&utm_medium=web&utm_source=IMLIX.COM

Contact information

IMLIX ID: 23045



IMLIX

Marché immobilier IMLIX
<https://www.imlix.com/fr/>

