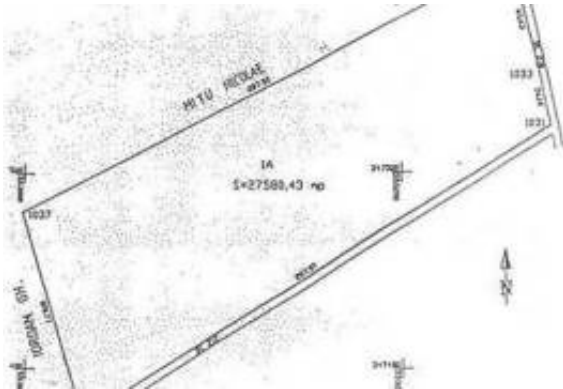




Land for sale 27000.0 sqm in Bucuresti, Baneasa area



Informazioni sull'Agente

Nome: ArKadia
Nome della ditta:
Nazione: United Kingdom
Telefono:
Languages: Dutch, English, French, German, Italian, Polish, Portuguese, Romanian, Russian, Spanish, Swedish

Dettagli dell'inserzione

Proprietà per: Saldi
Prezzo: USD 7,921,044.62

Posizione

Nazione: Romania
Stato / Regione / Provincia: Bucuresti
Pubblicato: 21/05/2025
Descrizione:
Located in Bucuresti.

****Land with an Interesting Location | Area: 27,500 sqm****

This property is perfect for residential, mixed-use, or commercial-office investments.

Situated between the beltway and Baneasa Forest, the generous size of the land allows for the design of a multifunctional complex, regulated by the upcoming approval of a separate zoning plan (PUZ) or in accordance with the provisions of the "Northern Area PUZ," which is currently under approval.

****Transaction Options:**** Part cash and part partnership! Utilities are located just 100 meters from the property. The area surrounding the land is slated for future asphalt and public lighting projects.

Comune

Dimensione del lotto: 27000 mq

Lease terms

Date Available:

Informazioni aggiuntive

URL del sito: http://www.arkadia.com/MGPD-T11787/?utm_cam



IMLIX

Mercato Immobiliare IMLIX

<https://www.imlix.com/it/>

paign=multicast&utm_medium=web&utm_source=
IMLIX.COM

Contact information

IMLIX ID:

14487

