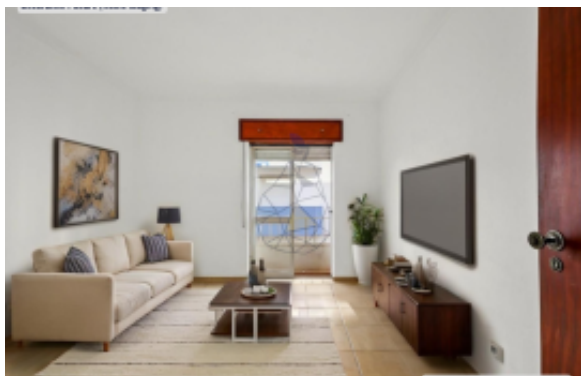




## 1 Bedroom Apartment Near the Riverside Zone - Portimão



### Informazioni sull'Agente

Nome: Pera Premium Properties  
Nome della ditta:  
Nazione: Portugal  
Experience since:  
Tipo di servizio: Selling a Property  
Specialties:  
Property Type: Apartments, Houses  
Telefono:  
Languages: English, Portuguese  
Sito web: <https://www.perapremiumproperties.pt>

### Dettagli dell'inserzione

Proprietà per: Saldi  
Prezzo: USD 210,754

### Posizione

Nazione: Portugal  
Stato / Regione / Provincia: Faro  
Città: Portimão  
Indirizzo: Portimão  
Pubblicato: 08/09/2025

### Descrizione:

Cozy 1 bedroom, apartment located just a few steps from the center of Portimão.  
Close to shops, schools, services, train station and various amenities.

This apartment is located on the 1st floor in a building without an elevator with only 2 floors and 2 apartments per floor.

### Composed of:

- Entrance hall.
- Living room.
- Room.
- Refurbished kitchen with pantry and a laundry space.
- Bathroom
- Balcony.



---

- Right to use the roof terrace of the building.

Come and Know this Opportunity, We are waiting for you.

Portimão is one of the most popular tourist destinations in the Algarve, southern Portugal. Here's a comprehensive overview of Portimão, covering several aspects:

Portimão is located in the Algarve region, on the southern coast of Portugal. It is the second largest municipality in the Algarve in terms of area and population.

It is bordered to the north by the municipality of Monchique, to the east by Silves and to the west by Lagos.

The geography is marked by golden sand beaches, rugged cliffs and an inland landscape characterized by hills and valleys.

Portimão boasts some of the most stunning beaches in the Algarve, including the famous Praia da Rocha, known for its extensive stretch of sand and impressive rock formations.

In addition to Praia da Rocha, there are other popular beaches, such as Praia do Vau, Praia dos Três Irmãos and Praia do Alvor.

The cliffs and rock formations along the coast offer hiking opportunities and stunning panoramic views of the Atlantic Ocean.

Tourism is an essential part of Portimão's economy, attracting visitors from all over the world all year round.

Top attractions include the Santa Catarina Fortress, offering panoramic views of the coast and the Arade River, and the Portimão Museum, which showcases the history of the canning industry in the region.

Portimão Marina is another major attraction, offering yachtsmen's facilities and a variety of beachfront shops, restaurants, and bars.

- REF: EF007 CN

Nuovo:	No
Costruito:	1982

## Comune

Camere da letto:	1
Bagni:	1
Finito piedi quadrati:	46 mq

## Lease terms

Date Available:

## Contact information

IMLIX ID:	EF007 CN
-----------	----------



# IMLIX

**Mercato Immobiliare IMLIX**  
<https://www.imlix.com/it/>

