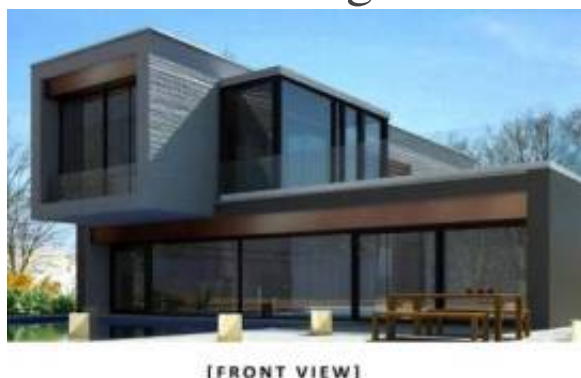




Reef Town 148 msq ground floor 2 bedrooms and 2 bathrooms and garden



[FRONT VIEW]

Informazioni sull'Agente

Nome:	ArKadia
Nome della ditta:	
Nazione:	United Kingdom
Telefono:	
Languages:	Dutch, English, French, German, Italian, Polish, Portuguese, Romanian, Russian, Spanish, Swedish

Dettagli dell'inserzione

Proprietà per:	Saldi
Prezzo:	USD 269,801.5

Posizione

Nazione:	Egypt
Pubblicato:	11/09/2025
Descrizione:	Reef Town Chalet

Reef Town Chalet 2 bedroom are developed to incorporate modern elements taken by the minimalistic style

of the natural colors and textures that compose Soma Bay.

2 bedroom ground floor chalet with seaview available in Reef Town apartments with just 10% down payment

5%. after 1 year

19 quarterly installments (5 year payment plan)

Delivery in 2 years

Reef Town Chalet is the latest project to reflect the beauty of the Red Sea in structure and design. Located between Soma Breeze and Wadi Jebal the strategic positioning of Reeftown on the reef side of the bay boasts unobstructed, panoramic views of the Red Sea and beyond.

The project is comprised of intimate, two to three-bedroom chalets that are designed to blend seamlessly into the surrounding natural landscape. In close proximity to the diverse facilities provided in Somabay,



residents of Reef Town are only a short walk away from our world-renowned golf course and the diverse and beautiful soma bay

SOMABAY is a ten million square meter resort peninsula on Egypt's Red Sea coast, designed to celebrate the best elements of the sun and sea. This self-contained resort paradise is encompassed by endless sandy beaches to the south and magical coral reefs to the north.

Somabay hosts a natural landscape accented by its diverse hotels, residential properties, golf course, thalasso spa, and water sports center. The peninsula is blessed with dry desert winds and low humidity. winters are temperate with daytime temperatures averaging into the low to mid 20 C while the summer averages 30 C.

Somabay is just four hours away from central Europe and a short drive from hurghada international airport, furthermore, the ancient sites of Luxor and the Nile valley are a convenient two hour drive.

Reef Town Chalet, Luxury undulated.....

Comune

Camere da letto:	2
Bagni:	2
Finito piedi quadrati:	148 mq

Building details

Numero di piani:	1
------------------	---

Lease terms

Date Available:

Informazioni aggiuntive

URL del sito:	http://www.arkadia.com/ONDA-T144/?utm_campaign=multicast&utm_medium=web&utm_source=IMLIX.COM
---------------	---

Contact information

IMLIX ID:	somareeftown2b
-----------	----------------

