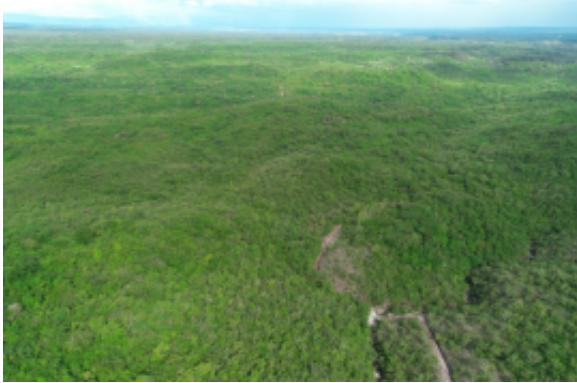




Vistas Las Colinas: Costa Rica's Hidden Gem: 482 Acres of Prime Development Opportunity near Rincon de la Vieja



Agent Info

Name:	Peter Breitlander
Company	Krain Costa Rica
Name:	
Country:	Costa Rica
Experience since:	2004
Service Type:	Selling a Property
Specialties:	
Property Type:	Apartments, Houses, Commercial Property
Phone:	+1 (866) 994-9163
Languages:	English, Spanish
Website:	http://kraincostarica.com

Listing details

Property for:	Sale
Price:	USD 499,000

Location

Country:	Costa Rica
State/Region/Province:	Provincia de Guanacaste
City:	Liberia
ZIP code:	50101
Posted:	Mar 08, 2025

Description:

Situated just east of Liberia, Finca Vistas Las Colinas is nestled in one of Costa Rica's best-kept secrets. Only 7 km (4.5 miles) from the city, it is near top-tier services and adjacent to the wild and thriving Rincon de la Vieja National Park.

This exceptional land is perfect for a variety of projects, including residential communities, building plots, golf courses, or renewable energy developments.

Introducing Finca Vistas Las Colinas, a unique opportunity for future development or ranching. Just a 20-minute drive from downtown Liberia—Costa Rica's second-largest city and home to the country's newest modern international airport—Finca Vistas Las Colinas stands out as a prime parcel of land. It's conveniently close to urban amenities while being only 30 km (19 miles) from some of the Pacific coast's finest beaches.



This exceptional land is perfect for a variety of projects, including residential communities, building plots, golf courses, or renewable energy developments.

Formerly cultivated with eucalyptus, mangoes, bananas, and palm oil, the property is also ideal for cocoa farming. In addition to its agricultural potential, Finca Vistas Las Colinas offers stunning views of rolling hills, ancient volcanoes, lush valleys, and the twinkling city lights of Liberia below—providing a breathtaking backdrop for any vision. Two rivers flow through parts of the property, ensuring the landscape remains vibrant and green all year round.

Moreover, the land features 1.4 kilometers (almost 1 mile) of frontage along the paved public road leading to the volcano, established in early 2008. With its wealth of springs, this property offers a water source that is both rare and valuable. Call today for more information.

Common

Lot Size: 195.37 ha

Lease terms

Date Available:

Contact information

IMLIX ID: IX6.717.423

