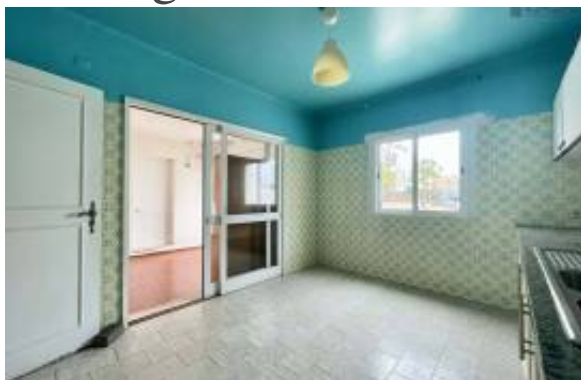




3 Bedroom Villa 5 Minutes Walk from the Beach | Privileged Location with High Potential for Appreciation



Informações do Revendedor

Name:	Teresa Vargas
Nome da Empresa:	Invesquart - Investimentos Imobiliários SA
País:	Portugal
Experience since:	
Tipo de Serviço:	Selling a Property
Specialties:	
Property Type:	Apartments
Telefone:	
Languages:	English, Portuguese
Website:	https://terracosdequarteira.com

Detalhes do anúncio

Imóveis para:	Venda
Preço:	EUR 600,000

Localização

Country:	Portugal
State/Region/Province:	Faro
Cidade:	Loule
Adicionado:	23/01/2026

Informação adicional:

We present a unique opportunity for those looking to invest or create the home of their dreams in one of the most privileged areas of the Algarve. This 3 bedroom villa is just a 5-minute walk from the beach, in an absolutely exceptional location, right next to the renowned Crowne Plaza Hotel, between Quinta do Romão and Vilamoura, benefiting from two independent entrances.

Spread over the ground floor, first floor and basement, this property needs a total refurbishment, but stands out for its enormous potential for appreciation and the ease of changing the layout, allowing the spaces to be adapted to a modern and functional concept, totally tailored to them. It is a solid basis for a rehabilitation project with a high return, whether for own housing, holiday home or investment for monetization.

The location is, without a doubt, its greatest asset: here you can do your whole life on foot, with quick access to beaches, restaurants, shops, services and leisure areas, without the need to use the car. A real privilege in one of the most sought-after areas in the region.



There is already a base budget for the renovation of the house, prepared by a builder, which can be presented to interested parties, facilitating investment planning from the first moment.

A rare property on the market, with a premium location, enormous potential for transformation and excellent prospects for profitability.

An unmissable opportunity for those who know how to recognize value where others see only one project. - REF: RP-3825

Novo: Não
Construído: 1987

Comum

Quartos de dormir: 3
Banheiro: 3
Pés quadrados acabados: 200 m²
Tamanho do lote: 180 m²

Lease terms

Date Available:

Contact information

IMLIX ID: RP-3825

