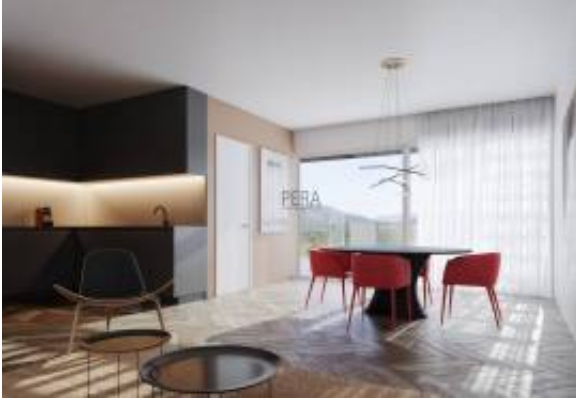




# IMLIX

IMLIX Gayrimenkul Pazarı  
<https://www.imlix.com/tr/>

## Magnificent 2 bedroom apartment refurbished view Rio - Portimão



### Emlakçı Bilgisi

İsim: Pera Premium Properties  
Şirket Adı: Pera  
Ülke: Portugal  
Experience since:  
Hizmet tipi: Selling a Property  
Specialties:  
Property Type: Apartments, Houses  
Telefon:  
Languages: English, Portuguese  
Web sitesi: <https://www.perapremiumproperties.pt>

### İlan Detayları

İçin mülk: Satılık  
Fiyat: EUR 325,000

### Konum

Ülke: Portugal  
Eyalet/Bölge/ Şehir: Faro  
Şehir/İlçe: Portimão  
Adres: Portimão  
Yayınlandı: 06.10.2021

### Açıklama:

Magnificent 2 bedroom apartment refurbished on the 2nd floor located in the riverside area of Portimão overlooking the Arade River and the city of Portimão.

Composed of entrance hall, large living room with equipped kitchen, 2 spacious bedrooms, 2 bathrooms, terrace, parking space.

Make your visit and come and see this excellent apartment

Visit Portimão is to know a wide variety of beaches of different characteristics and available to enjoy at any time of the year.

Be surprised by the wide sandy beaches of Alvor Beach; with the most hidden little coves, cliffs and caves along the coast; with rocky beaches such as Alemão beach, with the animation of the more familiar beaches or with the unique beauty of Praia da Rocha.

In Portimão the sun shines brightly about 300 days a year on the eight kilometers of the most beautiful and welcoming Algarve beaches: fine white sands, transparent, calm and refreshing waters that stretch



# IMLIX

IMLIX Gayrimenkul Pazarı  
<https://www.imlix.com/tr/>

between the Ria de Alvor a West and the estuary of The Arade to Nascente.

Have fun and with the help of this summary choose the beach that best suits your taste and needs and find out why the beauty of the Algarve beaches is in Portimão.

Portimão is a municipality and a Portuguese city in the District of Faro, region and sub-region of the Algarve. The city centre is situated about 2 km from the sea and is an important fishing and tourism centre.

It is the headquarters of a municipality with 182.06 km<sup>2</sup> of area and 55 614 inhabitants (2011), subdivided into 3 parishes among them that of Portimão that includes the city has about 40 000 inhabitants.

The municipality is bordered to the north by the Monchique, to the east by silves and lagoa, and to the west by Lagos; to the south, it has a coastal sector along the Atlantic Ocean. - REF: LG030 CN

Yıl: 2021

## Genel Bilgiler

Yatak odası: 2  
Banyo: 2  
Bitmiş metrekare: 78 m2

## Lease terms

Date Available:

## Contact information

IMLIX ID: LG030 CN

