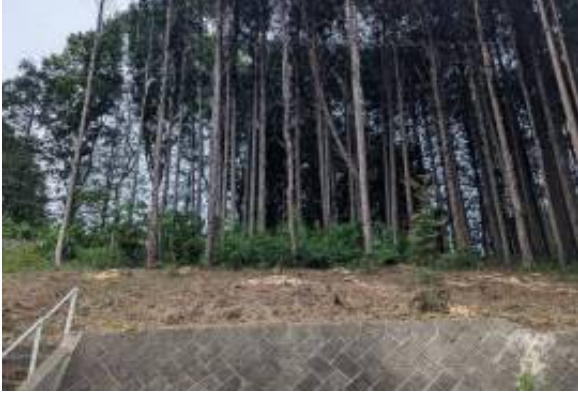




Excellent Plot of land for sale in Sakura Japan



Emlakçı Bilgisi

İsim:	Niall Madden
Şirket Adı:	Esales Property Limited
Ülke:	United Kingdom
Experience since:	2002
Hizmet tipi:	Selling a Property
Specialties:	
Property Type:	Apartments
Telefon:	
Languages:	English
Web sitesi:	https://esalesinternational.com

İlan Detayları

İçin mülk:	Satılık
Fiyat:	USD 26,207.39

Konum

Ülke:	Japan
Eyalet/Bölge/ Şehir:	Tochigi
Adres:	Kitsuregawa 222
Yayınlandı:	24.07.2025

Açıklama:

Excellent Plot of land for sale in Sakura Japan

Esales Property ID: es5554698

5743-13, Fiore Kitsuregawa 1-Chome:

Sakura
Tochigi
329-1417
Japan

A Rare Opportunity: Land for Sale in a Historic Samurai Town with Skin-Healing Hot Springs – Kitsuregawa Onsen, Tochigi Prefecture, Japan

Discover an extraordinary chance to acquire a unique parcel of land in the picturesque and historically rich Kitsuregawa Onsen area of Tochigi Prefecture, Japan. This exceptional plot, spanning 421 square meters, offers an unparalleled combination of natural beauty, cultural heritage, and direct access to renowned therapeutic hot springs. Perfect for those dreaming of a private retreat, a distinctive vacation home, or a truly unique development opportunity, this land represents a gateway to a serene and culturally



immersive Japanese lifestyle.

Direct Access to Legendary Hot Springs

One of the most compelling features of this property is its direct connection to Kitsuregawa Onsen, celebrated throughout Japan for its exceptional, skin-beautifying hot spring water. Kitsuregawa Onsen is one of Japan's three best 'Bijin-no-Yu' (hot springs for beautiful skin), renowned for its alkaline properties that leave skin feeling smooth and soft. The incredible advantage of this particular land parcel is that the Onsen (hot spring) piping is already installed on the property. This crucial pre-existing infrastructure means that the future owner can immediately tap into this precious natural resource, allowing for the effortless creation of private hot spring baths within their own home or development. Imagine the luxury of having unlimited access to these therapeutic waters, offering daily relaxation and rejuvenation in the privacy of your own sanctuary.

Strategically Located for Convenience and Exploration

Despite its tranquil and natural setting, this land parcel boasts superb accessibility, making it incredibly convenient for both domestic and international visitors. The property is reachable from Tokyo in approximately 100 minutes by public transportation. This relatively short travel time to one of the world's most vibrant metropolises ensures that urban amenities, international airports, and global connections are always within easy reach, offering a perfect balance between serene countryside living and cosmopolitan access.

Furthermore, the location provides excellent proximity to some of Japan's most celebrated tourist destinations. In under 1 hour by car, you can reach the iconic sites of Nikko and Nasu. Nikko is a UNESCO World Heritage site, famous for its elaborate shrines and temples, set amidst stunning natural beauty, including waterfalls and autumn foliage. Nasu, on the other hand, is known for its beautiful highlands, royal villa, ski resorts, and diverse range of hot springs and charming cafes. This strategic positioning means residents or guests can easily embark on day trips to explore historical treasures, enjoy outdoor activities, or simply indulge in regional culinary delights.

A Setting of Natural Beauty and Historic Charm

The land is enveloped by a captivating environment that changes beautifully with the seasons. Spring brings a breathtaking display of seasonal cherry blossoms, painting the landscape in delicate pink hues and creating an idyllic backdrop for outdoor living. The surrounding area maintains the charm of a traditional hot spring town, where visitors can stroll through quaint streets, discover local eateries, and experience the timeless allure of Japanese hospitality.

For golf enthusiasts, the location is particularly advantageous, with a golf course located just a 6-minute drive away. This offers convenient access to recreational activities without compromising the property's serene atmosphere. Importantly, the land is situated within the historic Kitsuregawa Onsen area itself, which was once a samurai castle town. This rich heritage imbues the area with a profound sense of cultural depth and historical significance. The legacy of the samurai era is still felt in the town's atmosphere and architecture, offering a truly immersive cultural experience that goes beyond mere



tourism.

Unlimited Potential for Your Vision

This 421-square-meter plot is perfectly suited for a variety of compelling visions:

- * **Private Retreat:** Imagine designing and building your dream Japanese escape – a bespoke home where you can unwind in your own private onsen, surrounded by nature and history. This offers unparalleled tranquility and a personal sanctuary away from the demands of modern life.
- * **Vacation Home:** For those seeking a unique holiday destination, this land provides the foundation for a vacation property that promises relaxation, cultural immersion, and convenient access to regional attractions. The existing onsen piping dramatically simplifies the creation of a private spa experience for family and friends.
- * **Unique Development Opportunity:** Given its onsen connection, historical context, and proximity to tourist hotspots, this land presents an extraordinary opportunity for various commercial developments. This could include:
 - * **Boutique Ryokan/Hotel:** A small, exclusive Japanese inn offering private onsen experiences for guests.
 - * **Luxury Vacation Rentals:** High-end homes or cabins catering to discerning travelers seeking unique stays.
 - * **Health and Wellness Retreat:** A specialized facility leveraging the skin-beautifying properties of the hot spring water.
 - * **Residential Development:** A small cluster of premium homes designed for those seeking a unique Japanese lifestyle or investment.

The inherent value of already having the onsen piping installed significantly reduces development costs and complexities, making these ventures more feasible and attractive.

Investing in the Allure of Japan

Investing in land in Japan, particularly in a location like Kitsuregawa Onsen, offers numerous advantages. Japan is renowned for its political stability, strong legal system, and high quality of life. The country's unique blend of ancient traditions and cutting-edge modernity attracts a global audience, ensuring a consistent interest in its property market. Furthermore, regions with natural assets like hot springs often see sustained demand, both from domestic and international buyers. The stable and safe environment, coupled with the inherent charm of Japanese culture, makes this an exceptionally appealing investment.

This rare offering of land in Kitsuregawa Onsen is more than just a plot of earth; it is an invitation to create something truly special. Whether you envision a personal haven of tranquility and healing, or a venture that capitalizes on the allure of Japan's hot springs and rich history, this property provides the perfect canvas. The combination of direct onsen access, strategic location, and charming surroundings makes this a truly unmissable opportunity in one of Japan's hidden gems. Interested parties are encouraged to explore the immense potential that this unique piece of land holds.

About the Area



Sakura City is a captivating municipality nestled in the heart of Tochigi Prefecture, Japan. Formed in 2005 from the merger of Ujiie and Kitsuregawa towns, its very name, 'Sakura,' meaning cherry blossom, reflects the local hope for a beautiful and flourishing community, much like the cherished flower itself. The city is renowned for its breathtaking cherry blossoms that blanket the landscape each spring, drawing visitors to picturesque spots like Katsuyama Park, which also holds the ruins of an ancient samurai castle. Beyond the seasonal spectacle, Sakura City offers a serene environment, blending its natural beauty with a rich historical tapestry that dates back to the Kamakura and Muromachi periods.

The city boasts a fascinating past as a samurai castle town, particularly in the Kitsuregawa area, which was governed by the Kitsuregawa Clan. During the Edo period, it also thrived as a vital post town along the Ōshū Highway. Today, glimpses of this history can be found in traditional Edo-period architecture, temples, and shrines scattered throughout the area, offering a unique insight into Japan's heritage. The Kitsuregawa area is also famous for its Kitsuregawa Onsen, renowned as one of Japan's 'Three Great Beauty Hot Springs,' attracting visitors seeking therapeutic and skin-beautifying waters. This blend of historical depth and natural healing makes Sakura City a distinctive destination.

Sakura City provides a comfortable and convenient living environment for its residents. It serves as a bedroom community for Utsunomiya City, the prefectural capital, with good transport links for commuters. The city center, around Ujiie Station, features commercial facilities, including a large shopping mall like AEON Town Sakura, offering supermarkets, clothing stores, and various convenient shops. For daily needs, Michi-no-Eki Kitsuregawa provides local specialties and fresh produce, along with the famous Kitsuregawa Onsen, a free footbath, and barbecue area. The city is also family-friendly, with numerous educational institutions from nursery schools to high schools.

For travelers, Sakura City is well-connected to major transportation hubs. The two nearest major international airports are Tokyo Haneda Airport (HND) and Narita International Airport (NRT). Both are approximately 90-110 kilometers away, with travel times to Sakura City typically ranging from 1.5 to 2.5 hours by public transportation or car. These airports offer extensive domestic and international flight connections, making Sakura City an accessible destination for those wishing to explore Tochigi Prefecture's unique blend of history, nature, and hot springs.

Main Features

- * 421 m2 of land for development
- * Excellent location close to many amenities
- * Stunning views.
- * Huge Potential in the rental market if developed on.

Contact us today to buy or sell your property in Japan fast online.

Genel Bilgiler

Bitmiş metrekare:	421 m2
Arazi Büyüklüğü:	421 m2

Lease terms



IMLIX

IMLIX Gayrimenkul Pazarı

<https://www.imlix.com/tr/>

Date Available:

Contact information

IMLIX ID:

IX7.345.987

